

FOXWOOD

A-277 CANADA Modular Homes



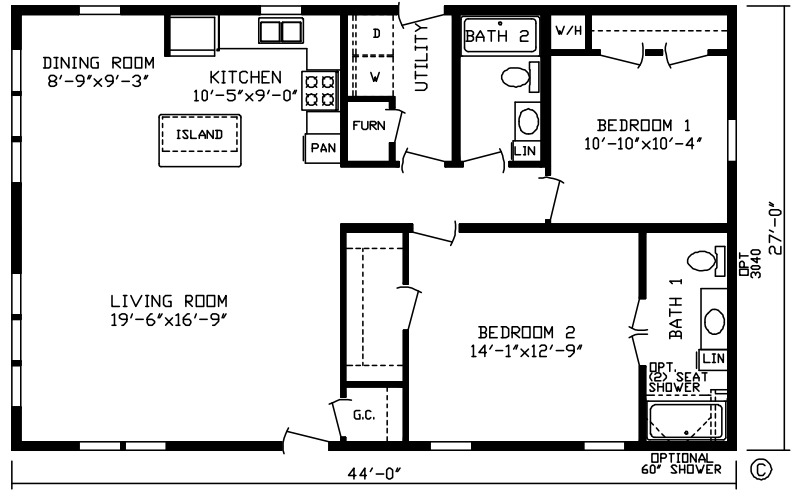
Luxury and Value

Exceed your Expectations with Fairmont Homes

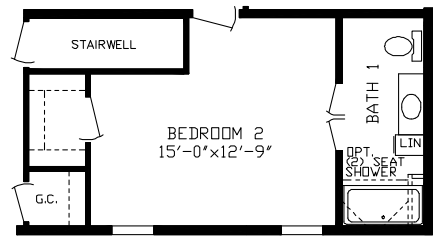


fairmonthomes.com

28 WIDES



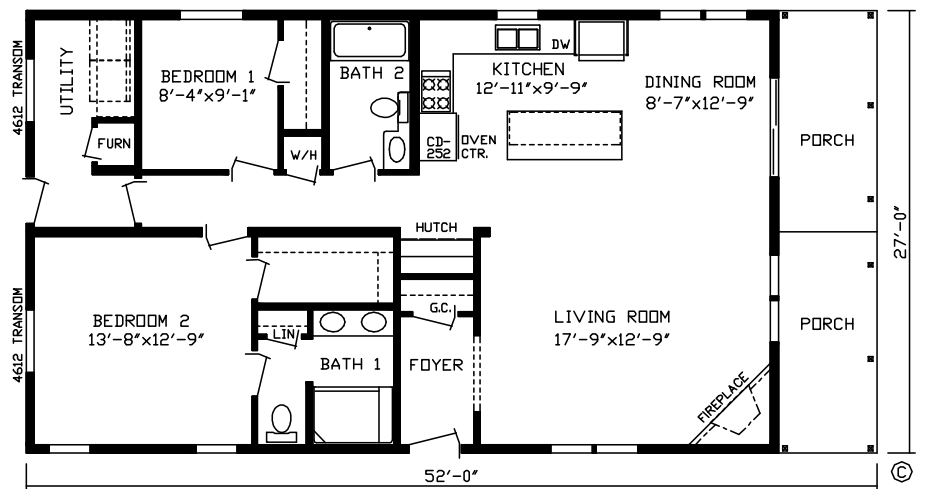
The Cottage
146037 (1,188 sq. ft.)



Opt. Basement Access
146037KA



Optional Anti-Scald 4 Jet Shower Panel (available only in ceramic shower)

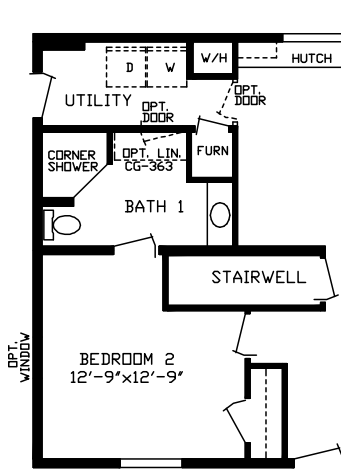


The Hamilton
146045 (1,242 sq. ft.) (Wall Oven / Microwave Combo and Surface Unit Standard)

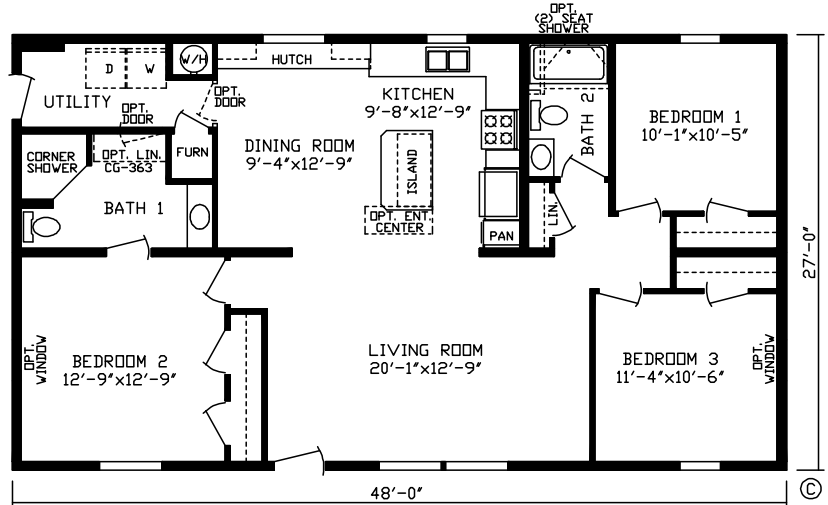
FOXWOOD

28 WIDES

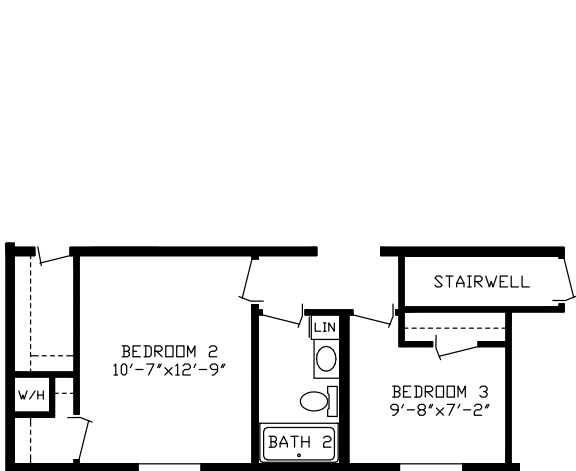
A-277 CANADA Modular Homes



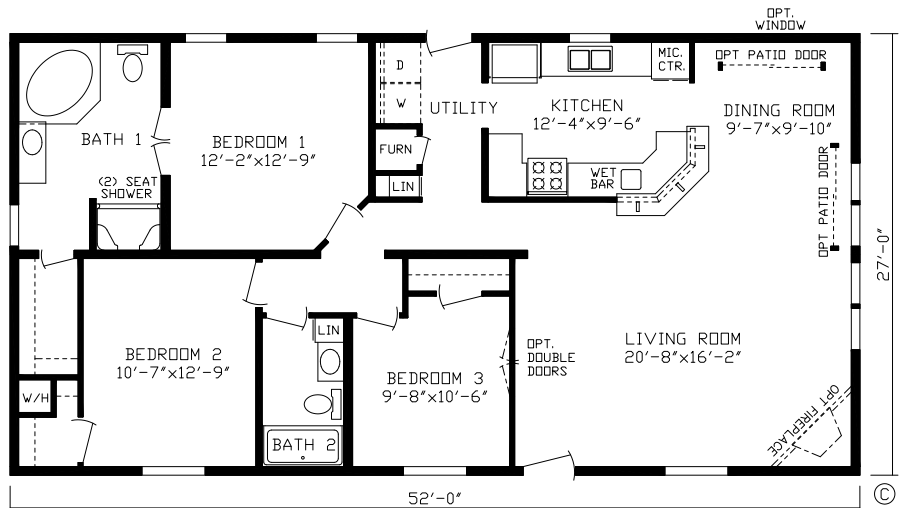
Opt Basement Access
146001KA



The London
146001 (1,296 sq. ft.)

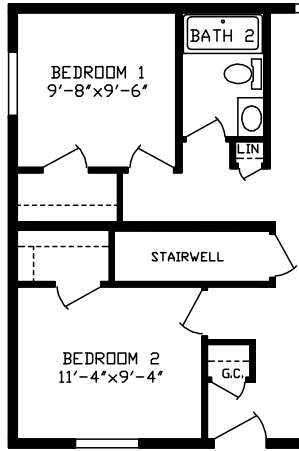


Opt Basement Access
146003KA

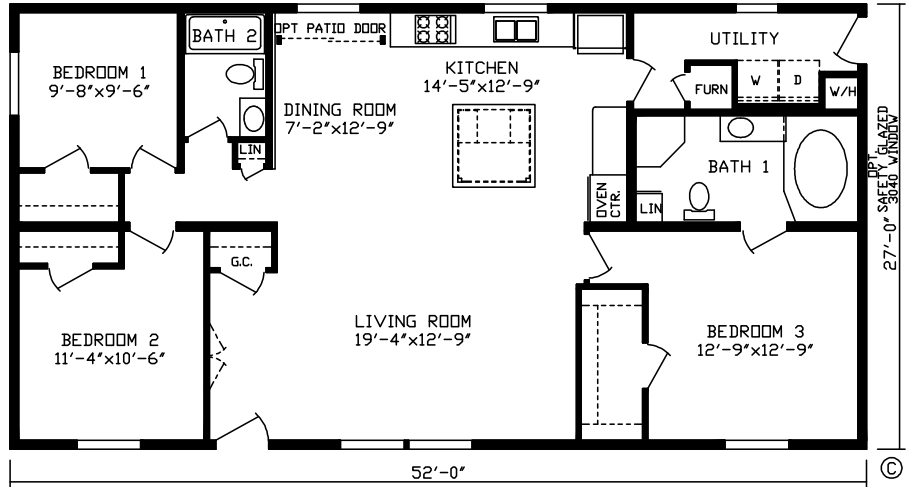


The Sault Ste. Marie
146003 (1,404 sq. ft.)

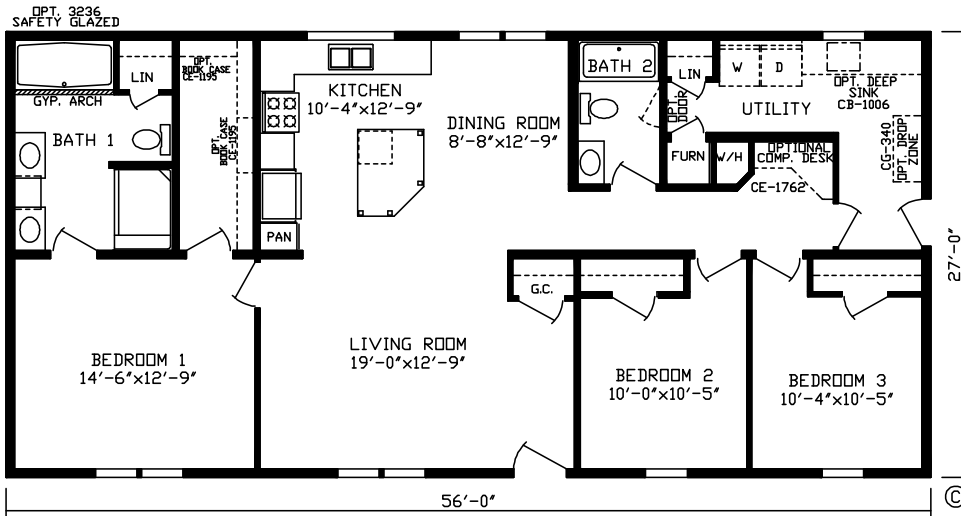
28 WIDES



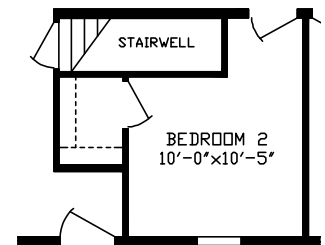
Opt Basement Access
146000KA



The Ontario
146000 (1,404 sq. ft.) (Wall Oven / Microwave Combo and Surface Unit Standard)



The Lakewood
146032 (1,512 sq. ft.)



Opt Basement Access
146032KA

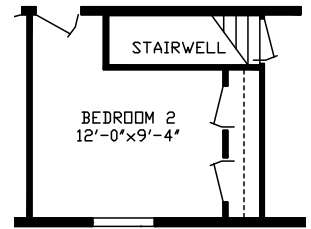
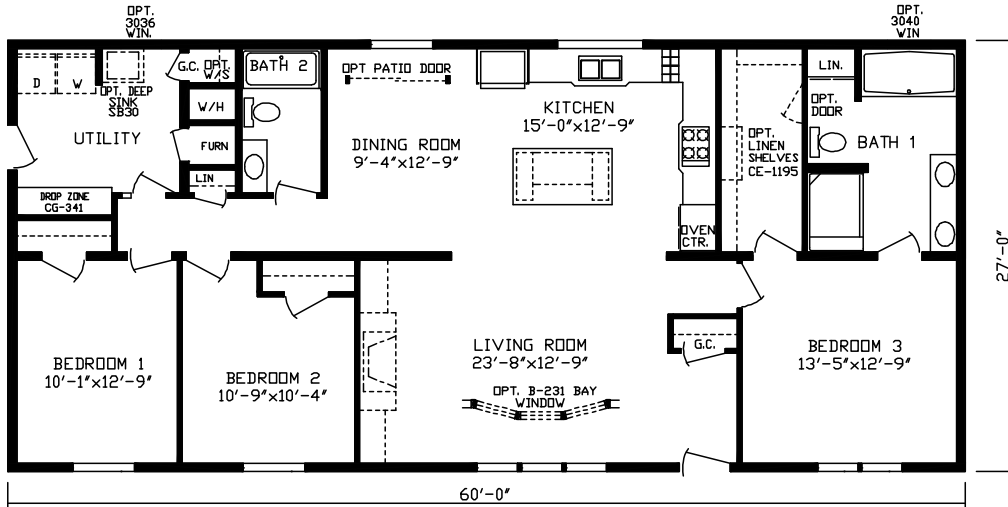


The Lakewood 146032

FOXWOOD

28 WIDES

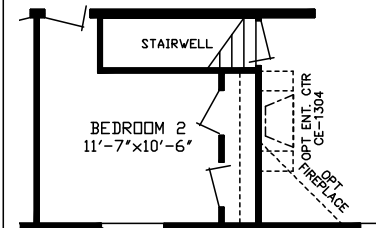
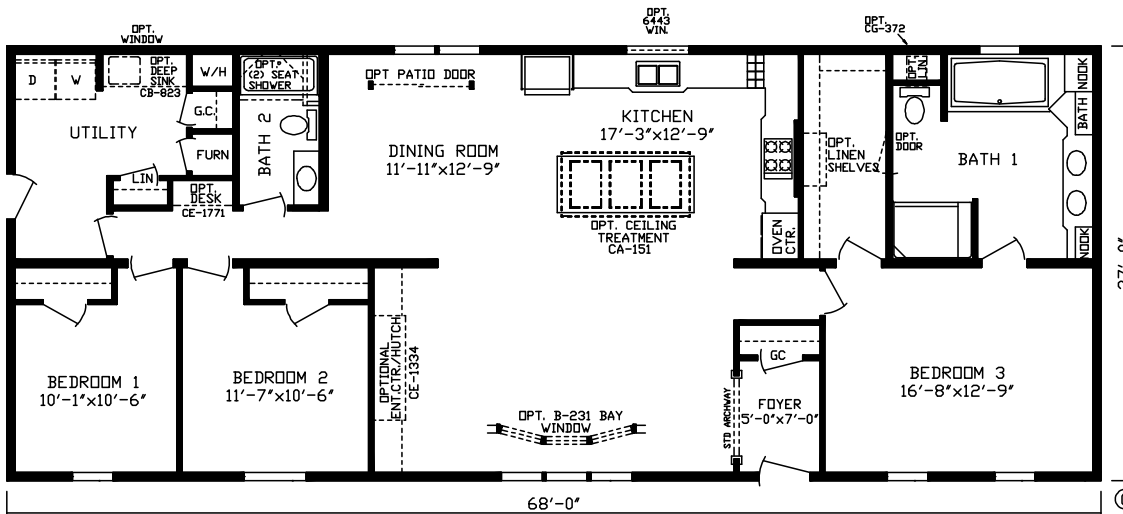
A-277 CANADA Modular Homes



Opt Basement Access 146022KA

The Kirkland Lake

146022 (1,620 sq. ft.) (Wall Oven / Microwave Combo and Surface Unit Standard)

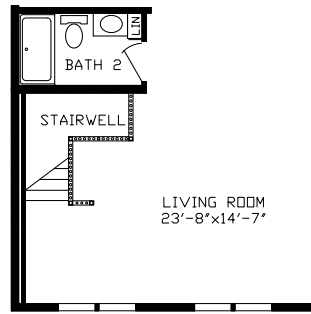


Opt Basement Access 146005KA

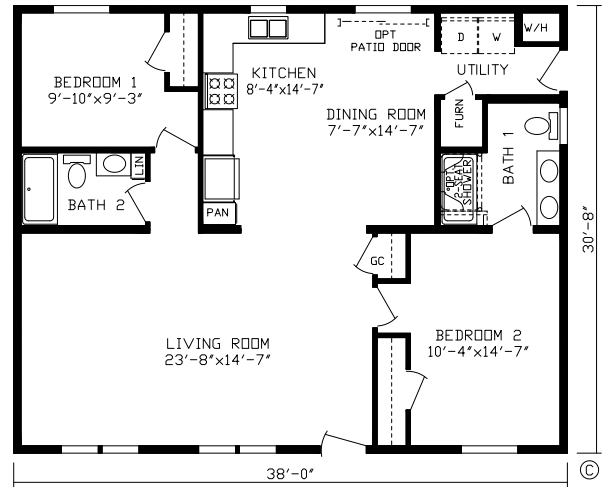
The Manitoulin

146005 (1,836 sq. ft.) (Wall Oven / Microwave Combo and Surface Unit Standard)

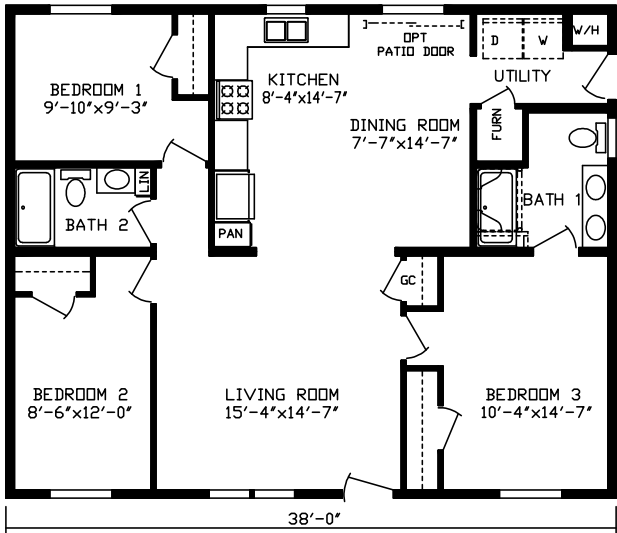
32 WIDES



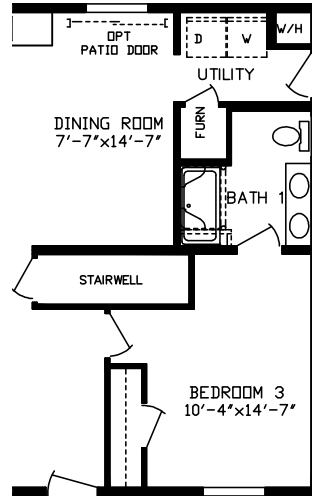
Opt Basement Access
146021KA



The Charlotte
146021 (1,165 sq. ft.)



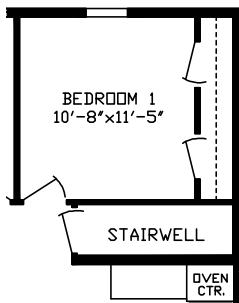
The Kingsley
146041 (1,165 sq. ft.)



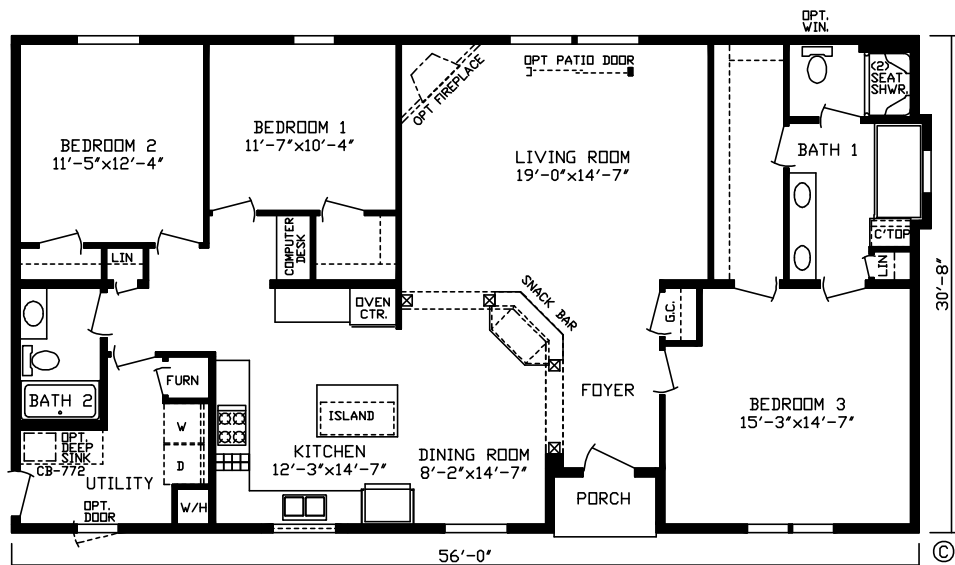
Opt Basement Access
146041KA



The Sydney 146043



Opt Basement Access
146004KA

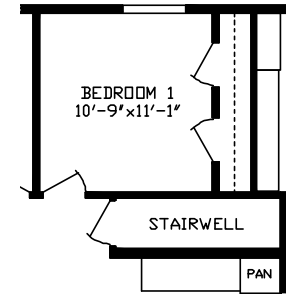
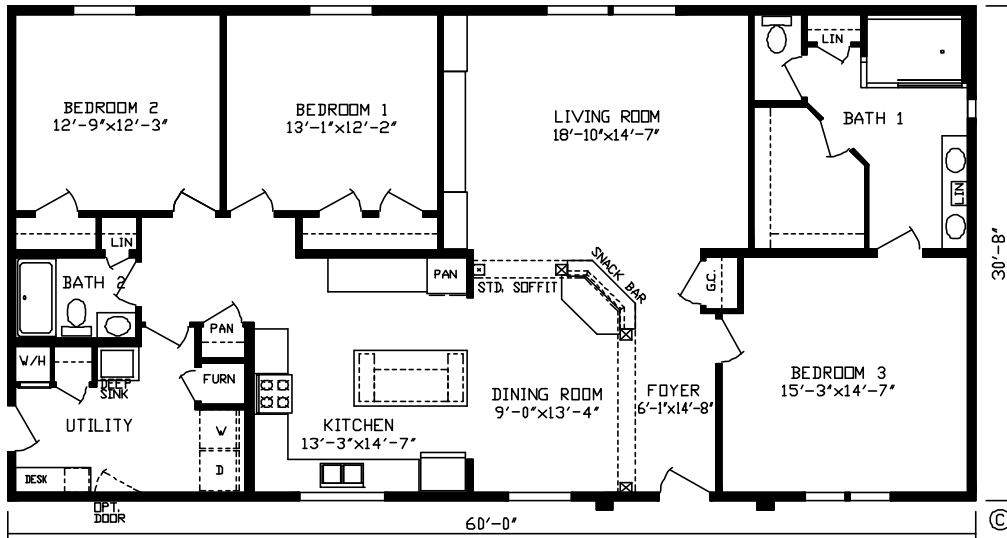


The Red Lake
146004 (1,717 sq. ft.) (Wall Oven / Microwave Combo and Surface Unit Standard)

FOXWOOD

32 WIDES

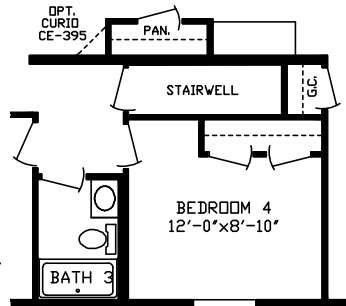
A-277 CANADA Modular Homes



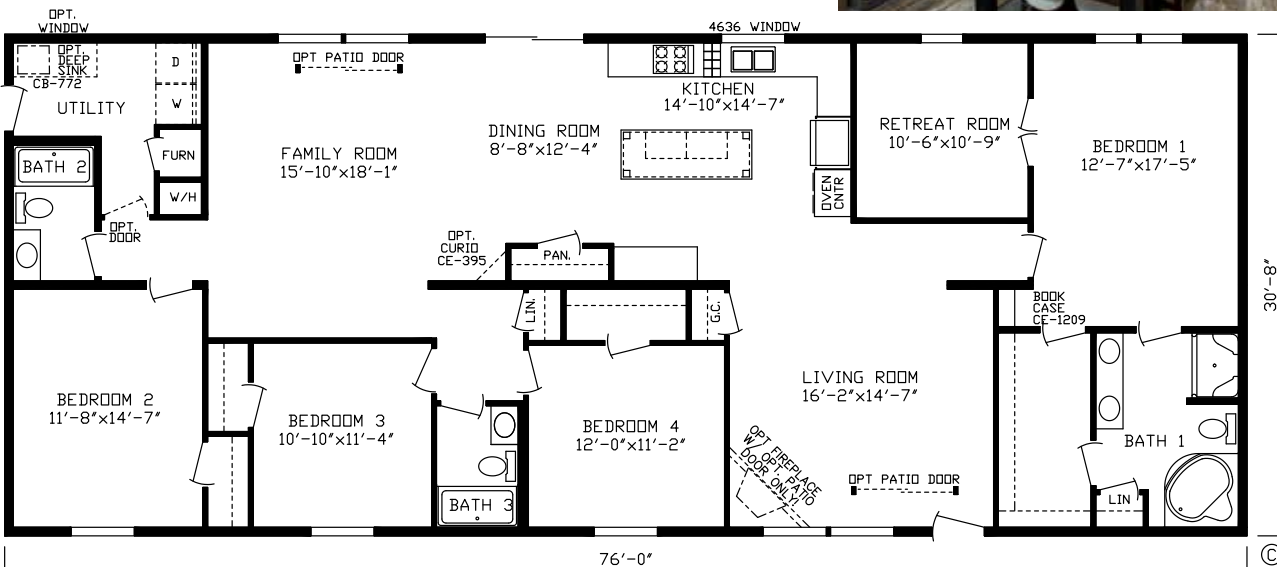
Opt. Basement Access
146043KA

The Sydney 146043

The Sydney
146043 (1,839 sq. ft.)



Opt. Basement
Access 146020KA



The Sudbury
146020 (2,330 sq. ft.) (Wall Oven / Microwave Combo and Surface Unit Standard)

FOXWOOD

A-277 CANADA Modular Homes

Standard Features

Energy Savings

- Kinro® Low E Gridded Thermopane Windows
- HomeGuard™ Exterior Weather Wrap
- OSB Exterior Sheathing Sidewalls & Endwalls
- 6 Mil Vapor Barrier At Exterior Walls
- R-50 Roof Insulation
- 2x6 Sidewalls w/R-24 Sidewall Insulation
- R-31 Floor Insulation
- Trane® 95% Plus High Efficient Furnace
- Perimeter Heat
- Zone 1 Region Requirements

Exterior & Construction

- 5/12 Roof Pitch
- 8' Sidewall Height w/Flat Ceilings
- 60 lb Ground Snow Load
- 2x10 Floor Joist 16 O.C.
- OSB Floor Decking
- Interior Walls, 16" O.C.
- Shutters Doorside
- 4 1/2" Dutch Lap Vinyl Siding
- Owens Corning® Architectural Shingles
- 1/2" OSB Roof Decking
- Lauan Substrate At Exterior Walls

Floor Coverings

- Shaw® 25 Ounce Nylon Carpet
- Foyer
- Congoleum® Linoleum (Kitchen, Utility, Bathrooms)
- 5 lb Rebond Carpet Pad
- Tack Strip Carpet Installation

All descriptive representations of products in this brochure are believed to be accurate at the time of publication. However, due to product improvement and changes in suppliers, design and production may vary. Some optional items shown and some images depicted in this brochure show porches, garages, or breezeways that are built on site by others.

© 2020 Fairmont Homes, LLC (01/2020)

Electrical

- 200 Amp Breaker Box
- (2) Exterior GFI Weather Resistant Receptacle
- Craftsman Exterior Light at Front & Rear Doors

Plumbing

- Utopia® Faucets Throughout
- 50 Gallon Electric Water Heater w/ Double Element
- 7" Stainless Steel Kitchen Sink
- Water Shut Off Valves At Sinks & Commodes
- Main Line Water Shut Off Valve at Water Heater
- Frost Free Faucet
- Pex Water Line System
- Plumb For Washer & Dryer
- HRV Unit & HRV Ductwork

Bathrooms

- 1 Piece Fiberglass Tubs
- Elongated Commodes
- Porcelain Sinks
- 2 Arm Lights Over Bathroom Sink
- Exhaust Fan w/Light
- Toe Kick Heat Registers (Where Applicable)

Cabinetry

- Custom Designed Kitchens
- Shaker Rustic Shore Mortise & Tenon Cabinet Doors
- Hardwood Cabinet Stiles, Pre-Drilled & Screwed
- Adjustable Hidden Hinges
- 3 1/2" Crown Molding Above Kitchen Cabinets
- High Pressure Laminated Countertops
- Drawer Above Base Cabinets In Kitchen
- Cabinets Over Refrigerator
- Breaker Box Cover
- Dovetail Drawers
- Refrigerator Enclosure

Décor

- Finished 1/2" Drywall Throughout
- Madison Drape Package
- Mini-Blinds
- 2 1/4" Door & Window Casing
- 2 1/2" Ceiling Cove
- 3 1/2" Base Shoe Molding
- Brushed Nickel Hardware & Cabinet Pulls
- Stippled Ceiling

Doors

- 38x82 White Decorator Front Door w/ Storm & Deadbolt
- 34x82 White Decorator Rear Door w/ Storm & Deadbolt
- 6 Panel White Interior Doors
- Furnace Door

Appliances

- 18 CF Black Frost Free Refrigerator
- 30" Black Standard Clean Gas Range w/Shut Off (Unless Specified as Wall Oven / Microwave Combo & Surface Unit Standard per Floor Plan)
- Dishwasher, Black
- Range Hood



fairmonthomes.com



FAIRMONT HOMES — Built with Brand Name Components

