

INNSBRUCK

A-277 CANADA Modular Homes



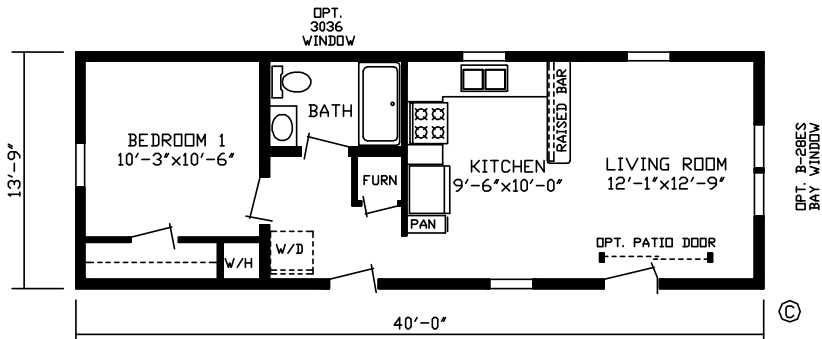
Luxury and Value

Exceed your Expectations with Fairmont Homes

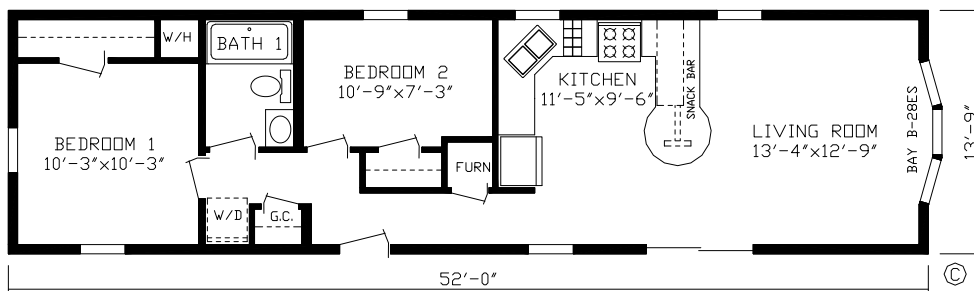


fairmonthomes.com

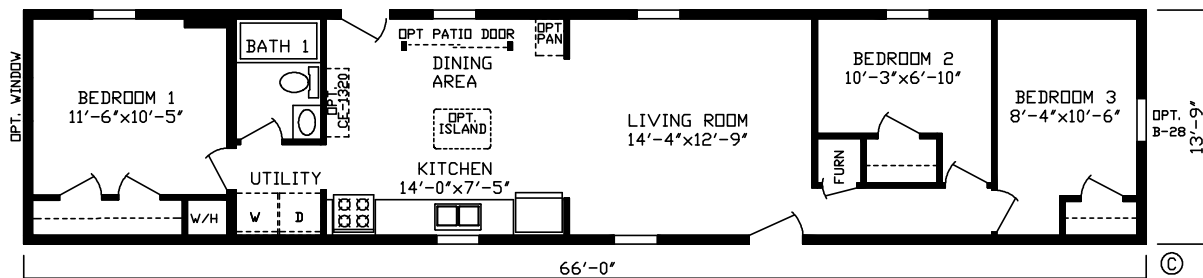
14 WIDES



The Brookside
147020 (550 sq. ft.)



The Huron
147029 (715 sq. ft.)

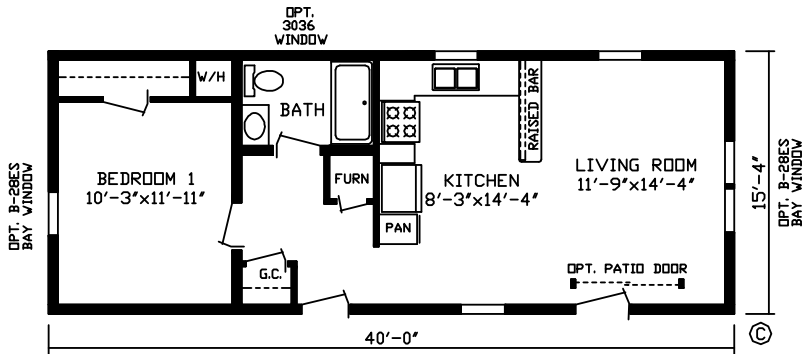


The Glen Haven
147001 (907 sq. ft.)

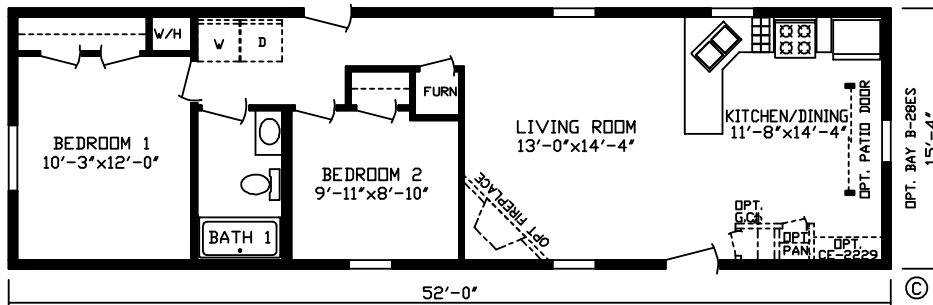
INNSBRUCK

16 WIDES

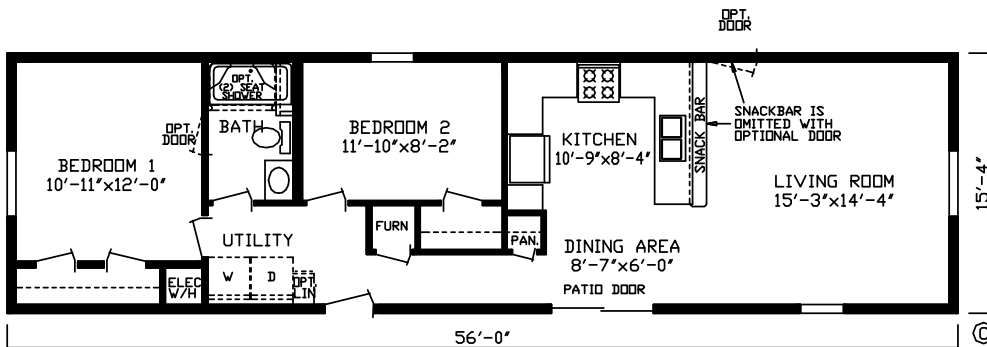
A-277 CANADA Modular Homes



The Pebble Run
147024 (613 sq. ft.)

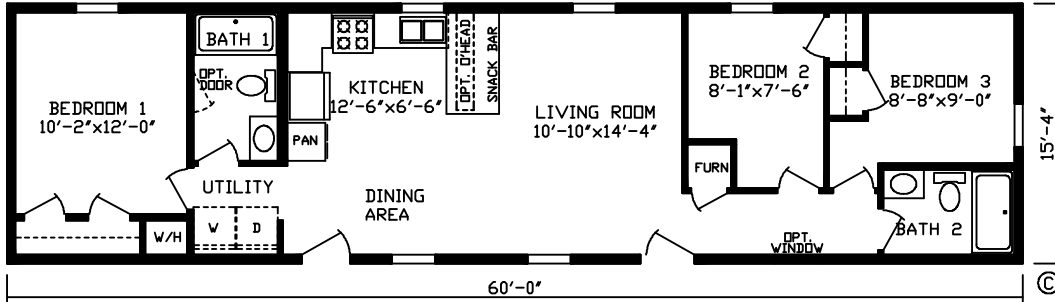


The Heron Cove
147004 (797 sq. ft.)

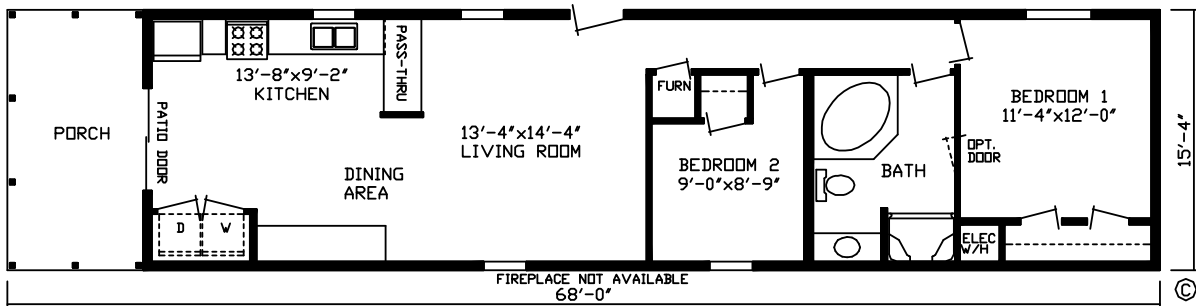


The Tanglewood
147011 (858 sq. ft.)

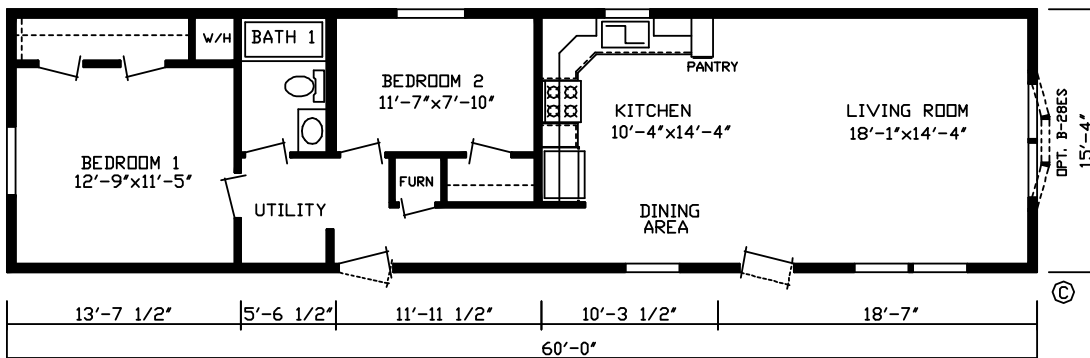
16 WIDES



The Briar Grove
147013 (920 sq. ft.)



The Norfolk Bay
147033 (920 sq. ft.)

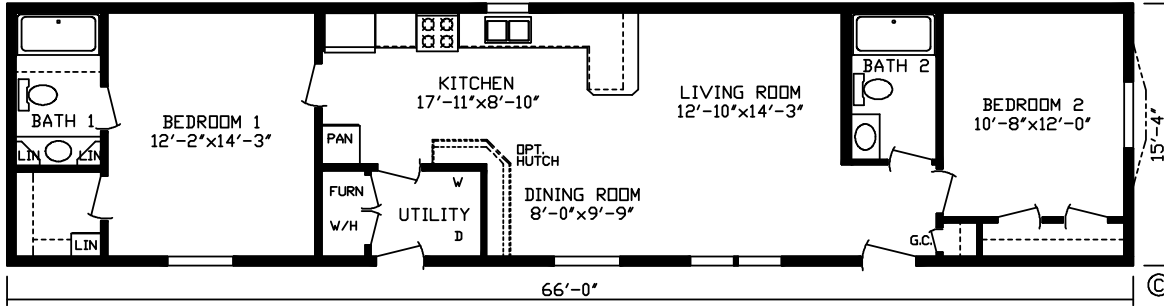


The Regina
147044 (920 sq. ft.)

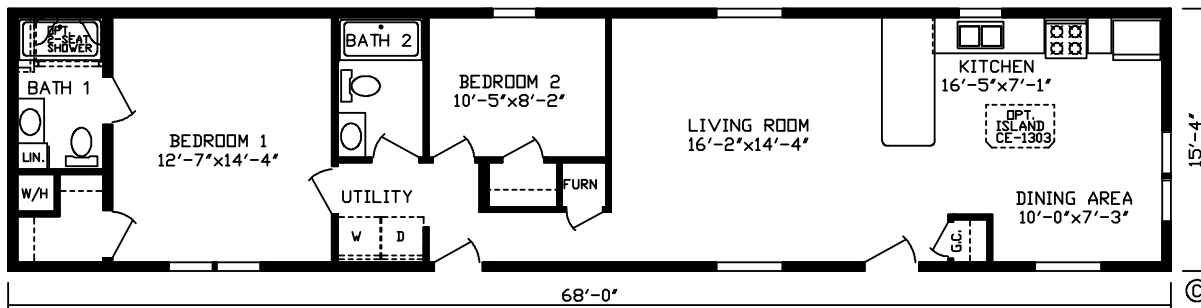
INNSBRUCK

16 WIDES

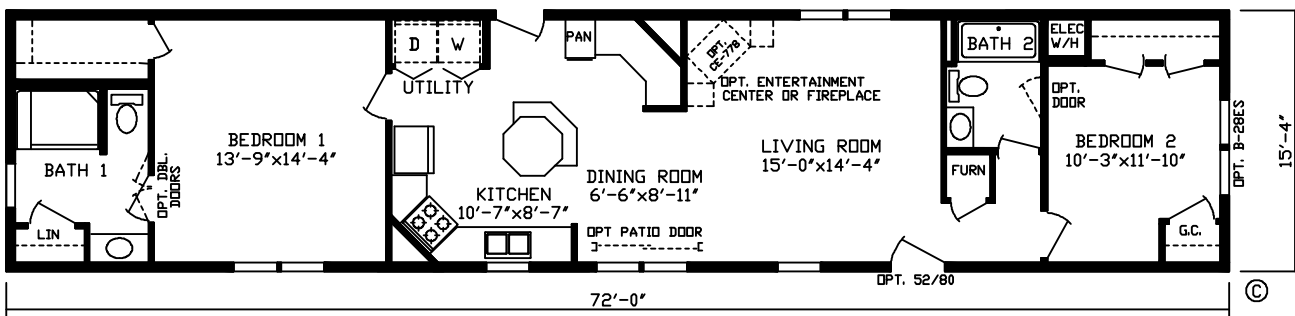
A-277 CANADA Modular Homes



The Brandon
147043 (1,011 sq. ft.)

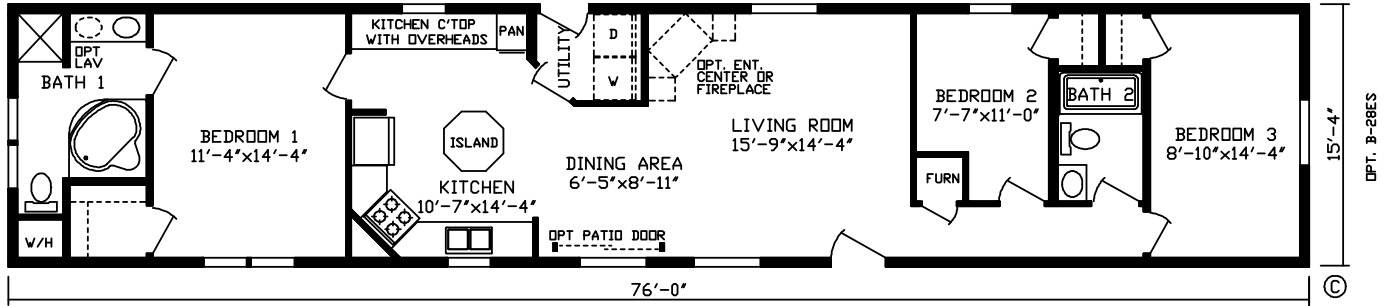


The Cypress Park
147022 (1,042 sq. ft.)

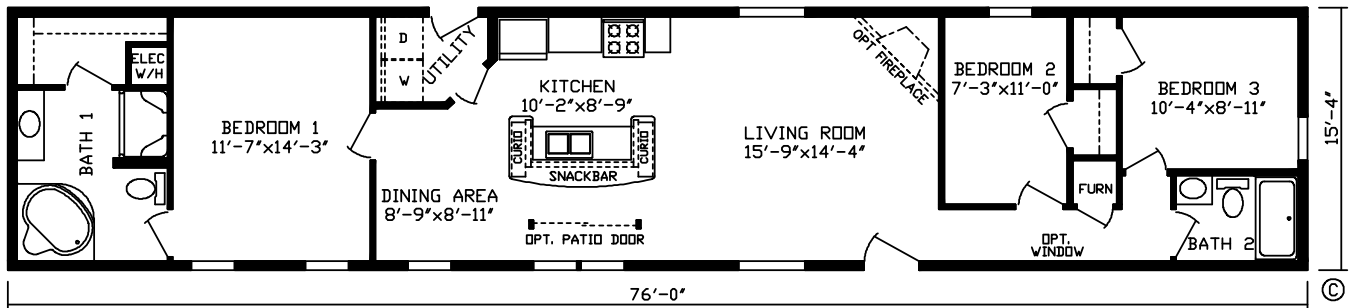


The Woodland
147019 (1,103 sq. ft.)

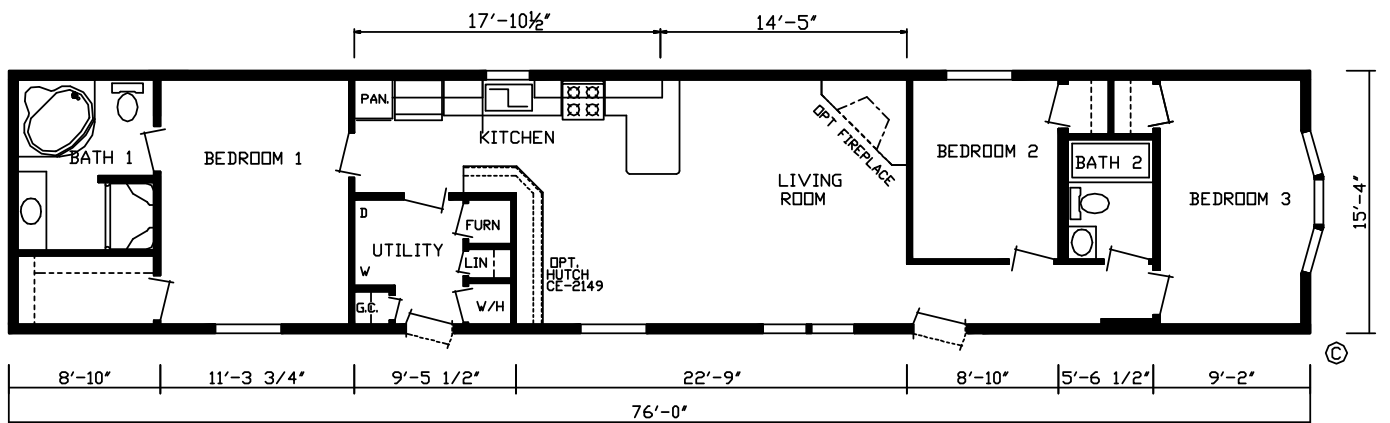
16 WIDES



The Evoque
147000 (1,165 sq. ft.)



The Grand Haven
147032 (1,165 sq. ft.)

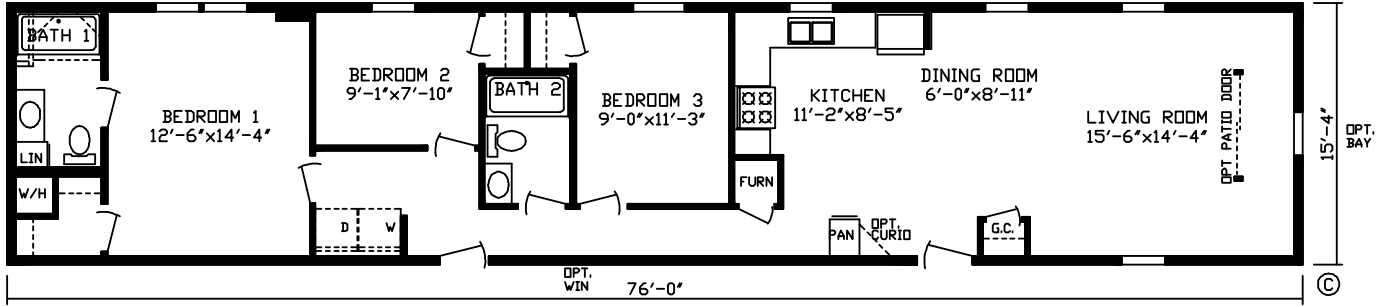


The Oakland
147040 (1,165 sq. ft.)

INNSBRUCK

16 WIDES

A-277 CANADA Modular Homes



The Pinnacle
147036 (1,165 sq. ft.)



INNSBRUCK

A-277 CANADA Modular Homes

Standard Features

Energy Savings

- Kinro® Low E Gridded Thermopane Windows
- HomeGuard™ Exterior Weather Wrap
- OSB Exterior Sheathing, Sidewalls & Endwalls
- 6 Mil Vapor Barrier At Exterior Walls
- R-50 Roof Insulation
- 2x6 Sidewalls w/R-24 Sidewall Insulation
- R-31 Floor Insulation
- Trane® 95% Plus High Efficient Furnace
- Perimeter Heat
- Zone 1 Region Specifications

Exterior & Construction

- 8' Sidewall Height w/Flat Ceilings
- 60 lb Ground Snow Load
- 2x10 Floor Joist 16 O.C.
- OSB Floor Decking
- Shutters, Doorside & Hitchend
- 4-1/2" Dutch Lap Vinyl Siding
- Owens Corning® 25 Year Shingles
- 1/2" OSB Roof Decking
- Lauan Substrate At Exterior Walls

Floor Coverings

- Shaw® 18 Ounce Nylon Carpet
- Congoleum® Linoleum (Foyer, Kitchen, Utility, Bathrooms)
- 5 Pound Rebond Carpet Pad
- Tack Strip Carpet Installation

All descriptive representations of products in this brochure are believed to be accurate at the time of publication. However, due to product improvement and changes in suppliers, design and production may vary. Some optional items shown and some images depicted in this brochure show porches, garages, or breezeways that are built on site by others.

© 2020 Fairmont Homes, LLC (01/2020)

Electrical

- 200 Amp Breaker Box
- (2) Exterior GFI Weather Resistant Receptacle
- Humidistat Installed
- LED Can Lights Standard

Plumbing

- Utopia® Faucets Throughout
- 50 Gallon Electric Water Heater w/ Double Element
- 7" Stainless Steel Kitchen Sink
- Water Shut Off Valves At Sinks & Commodes
- Main Water Shut Off In Water Heater Compartment
- Frost Free Faucet
- Pex Water Line System
- Plumb For Washer & Dryer

Bathrooms

- 1 Piece Fiberglass Tubs
- Elongated Commodes
- Porcelain Sinks
- Mirror Above Each Bath Lav
- Cosmetic Light Above Mirror In Baths
- Exhaust Fan w/Light

Cabinetry

- Custom Designed Kitchens
- Shaker Rustic Shore Mortise & Tenon Cabinet Doors
- Hardwood Cabinet Stiles- Pre-Drilled & Screwed
- Adjustable Hidden Hinges
- 3-1/2" Crown Molding Above Kitchen Cabinets
- Formica Edging In Kitchen
- High Pressure Laminated Countertops & Backsplash
- Drawer Above Base Cabinets In Kitchen
- Cabinets Over Refrigerator
- Breaker Box Cover
- Dovetail Drawer

Décor

- Madison Drape Package
- 1" Mini-Blinds
- 2-1/4" Door & Window Casing
- 2-1/2" Ceiling Cove
- Brushed Nickel Hardware & Cabinet Pulls
- 1/2" Vinyl on Gypsum Walls
- Stippled Ceiling

Doors

- 38x82 White Decorator Front Door w/ Storm & Deadbolt
- 34x82 White Decorator Rear Door w/ Storm & Deadbolt
- 6-Panel White Interior Doors
- Furnace Door

Appliances

- 18 CF Black Frost Free Refrigerator
- 30" Black Standard Clean Gas Range w/Shut Off
- Dishwasher - Black



fairmonthomes.com



FAIRMONT HOMES — Built with Brand Name Components

